

Getting Started

ConnectWare standalone/Client

Content

1. Introduction	2
2. Installation	2
3. Evaluation Copy	2
4. Licencing The Product	2
5. Distribution	3
6. First Steps	3
7. Create Data Source	4
8. Create Table	6
9. Delete Data Source	9

1. Introduction

We thank you for your interest in our products. Please read the following information carefully.

Additional information you will find in the Online Manual of the installed product. The documentation can be found in the program group „PARKWAY ConnectWare“.

2. Installation

Please unpack the downloaded ZIP file into one directory and run the installation with executing the Setup.exe program. Please follow the installation dialogue.

The install process installs all product modules. After a successful installation the program group „PARKWAY ConnectWare“ can be found on the Windows system.

Administrator rights are necessary to install the product.

3. Evaluation Copy

The Evaluation Copy has a time limit of 45 days. Also the result set is limited to 200 rows. Only 200 data records are displayed even the result of the query has more records. In all other parts the product has full functionality.

4. Licencing The Product

The prices for the product can be seen here:

<http://www.parkway-software.com/index.php?id=66&L=1>

The price for ConnectWare standalone is also applicable if it is installed on a Server with multiple clients using it via networks or software architecture (Web-Server, Database Server etc.) .

Only with purchasing one master copy of ConnectWare standalone you are allowed to purchase additional user licences. The licence fee is per user.

5. Distribution

With purchasing a user licences you are allowed to distribute them to your client.

All software modules need to be installed on the target machine.

More information can be found in the online documentation.

The Data Source Installation Tool (DSINST) provides by PARKWAY makes it easier to install user licences on the target system.

This tool will only be provided together with a purchased copy of ConnectWare.

With DSINST and the Silent Setup functionality all necessary configuration work (creating an ODBC Data Source) and copy jobs can be integrated into your own installation procedure. This allows the installation of the Data Sources on target machines without user action.

A detailed description is available within the ZIP file. Please read the README.TXT file. Do not run dsinst32.exe before you have made your changes to the script file, otherwise you will install unwanted example ODBC Data Sources on your PC.

6. First Steps

After a successful installation the program group „PARKWAY ConnectWare“ can be found on the system.

These programs can be started:

- Online Documentation
- Configuration
- Microsoft ODBC Administrator

The following text describes how an ISAM file can be configured as an ODBC Data Source. These files are needed:

- The ISAM file (e.g. *.DAT., *.ISM,...)
- The corresponding index part (e.g. *.IDX, *.KEY ...)
- The file description (FD) as COBOL source code (e.g. *.CBL, *.CPY ...)

Open the Microsoft ODBC Administrator from the PARKWAY programm group. The ODBC Administrator administrates the ODBC Data Sources. The register „ODBC drivers“ lists all installed drivers. Here can also be found the entry „PARKWAY ConnectWare for ISAM“.

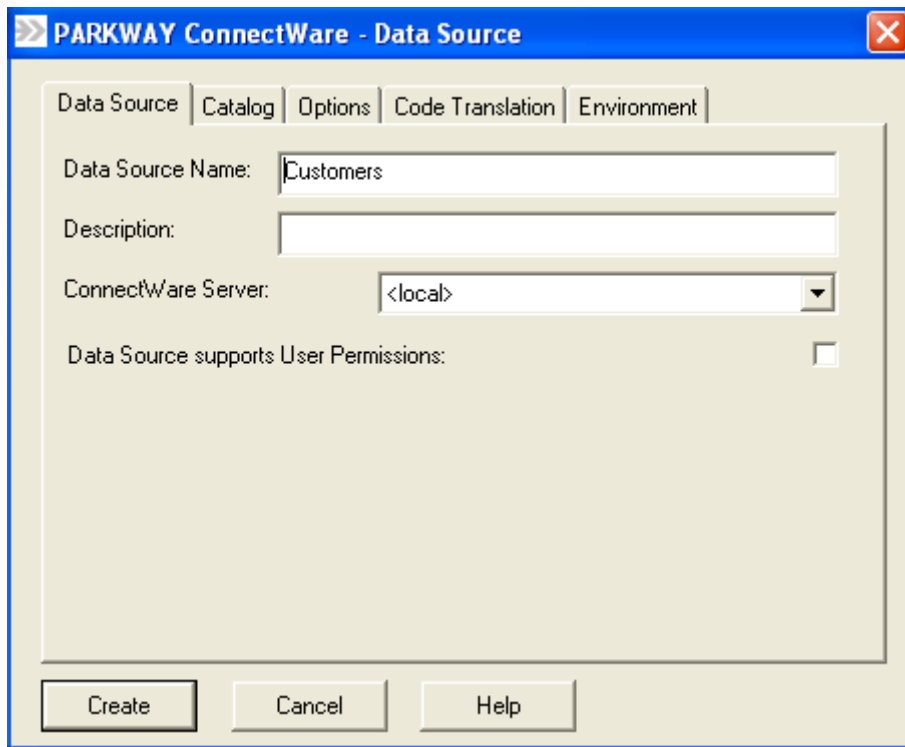
ODBC Data Sources can be created as User-, System or File-Data sources. Detailed descriptions about the difference between the three formats can be found in the Online Manual of the ODBC Administrator.

7. Create Data Source

Our example creates a User-Data Source. For this you need to click on the register "User-Data Source". Here are all installed User-Data Sources be shown. To create a new Data Source the click on the button „Add“. Now chose the entry „PARKWAY ConnectWare for ISAM Files“ from the list.

The following dialogue is detailed documented in the online manual of the installed product. Here are only the main entries described.

Data Source



PARKWAY ConnectWare - Data Source

Data Source | Catalog | Options | Code Translation | Environment

Data Source Name:

Description:

ConnectWare Server:

Data Source supports User Permissions: ☐

Create Cancel Help

Data Source Name:

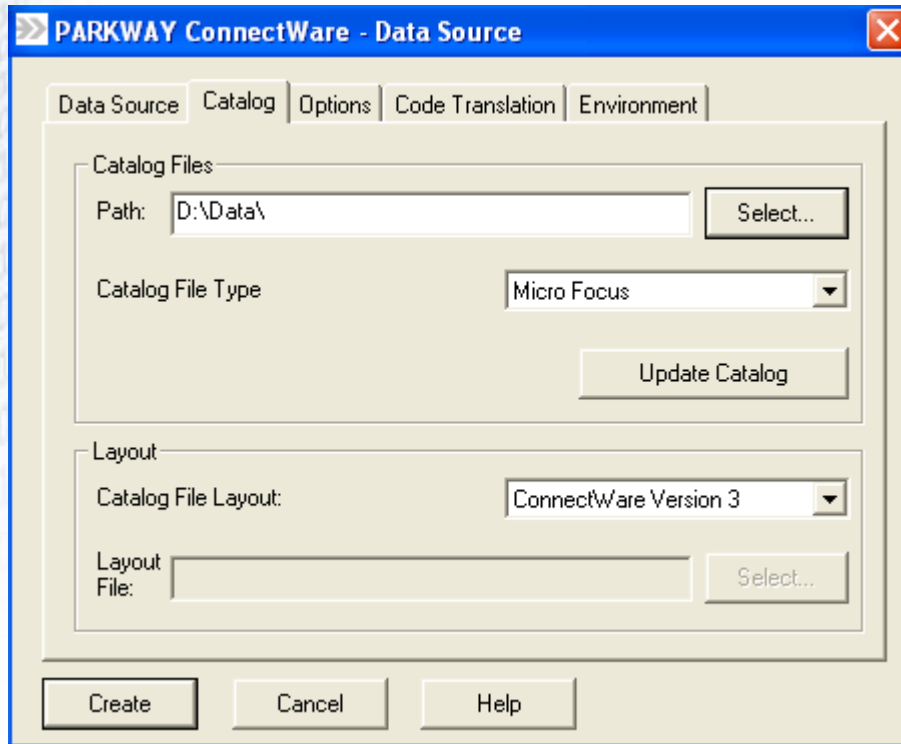
The name under which the ODBC data source is registered in the ODBC System. E.g. „Customers“.

ConnectWare Server:

Only if additionally the product ConnectWare Server is installed either on a Windows or UNIX/Linux Server. Here the name of the server must be entered.

Is no ConnectWare Server installed, then „local“ must be used. This is the standard entry.

Catalog



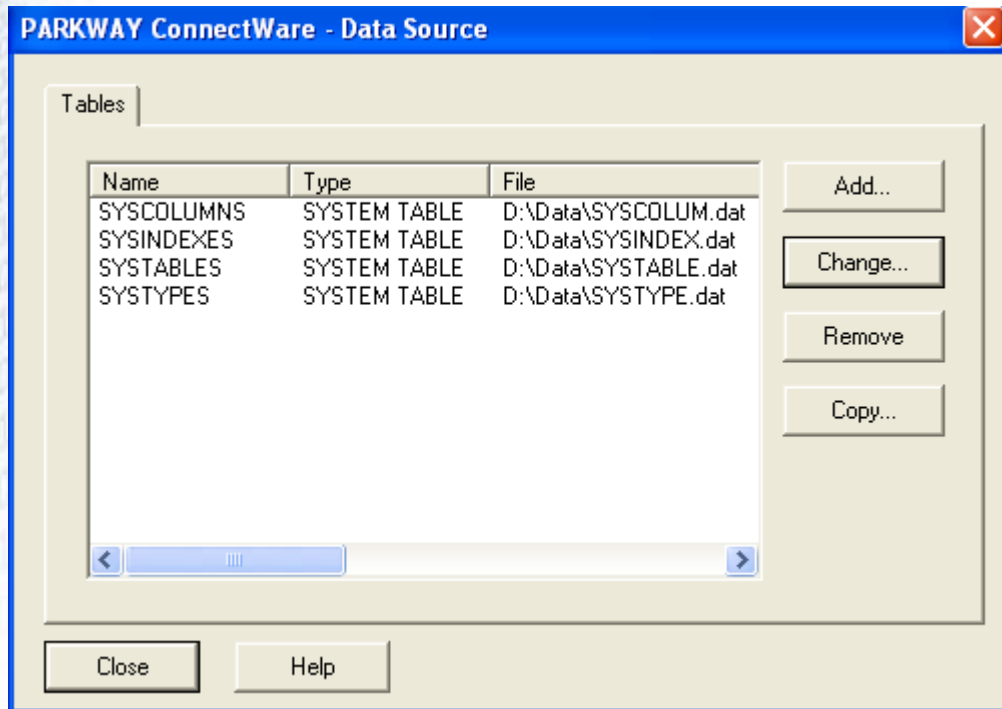
Path:

The name of the physical path to the system tables. The system tables describe the data source. E.g.: D:\Data.

“Create” - creates the ODBC data source.

“Connect” – log on to the data source.

The following dialogue appears:



Detailed information are again to be found in the online manual of the installed product.

8. Create Table

Now the ODBC data source has been created and the ISAM files need to be defined as ODBC tables. For this click on "Add", the following dialogue appears:

PARKWAY ConnectWare - Table Definition

Table
Name:

File | Keys | Columns | Indexes | Options | Statistics

File
Name:
Format:

Organization
☐ sequential
☐ line sequential
☒ indexed
☐ relative

Record Length
☒ fixed ☐ variable
 Max Record Length:
 Min Record Length:

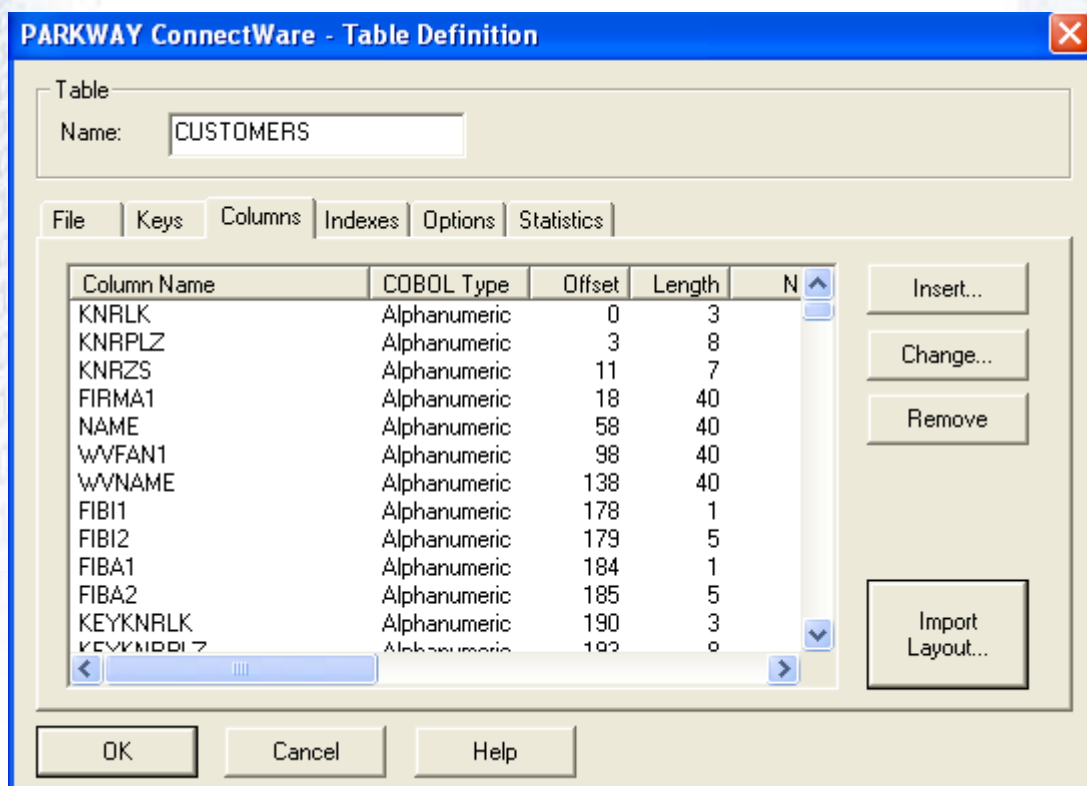
At the beginning this fields are empty. With “Select” can the ISAM file(s) be selected which should be added as table(s) to the ODBC data source. After this is done the information will be displayed automatically.

For sequential files which have no index files (IDX, KEY ...) the record length must be filled in manually.

Chose now „Columns“ and in the following dialogue „ Import Layout “.

Please also read the detailed information in the online manual.

Via “Select” browse for the matching COBOL source file with the record description (FD Section) for the ISAM file. In the list now the correct record description must be choosen with a double click.



These column names are also be used from the ODBC Tool (e.g. MS Access, Crystal Reports ...).

The names can be changed and columns can also be deleted. This does not affect the real ISAM file. Only the columns for the ODBC system are configured here.

With „OK“, „Close“ and „OK“ in following dialogues ConnectWare will be closed.

Now the ODBC data source with the table customers has been created. You will find this name listed in the list of User-Data sources in the Microsoft ODBC Administrator.

Any ODBC enabled application like reporting tools, databases or programming languages can access this data source.

ConnectWare supports different levels of data access rights, beginning with a simple write lock up to user dependent access rights at table level to avoid unauthorized access.

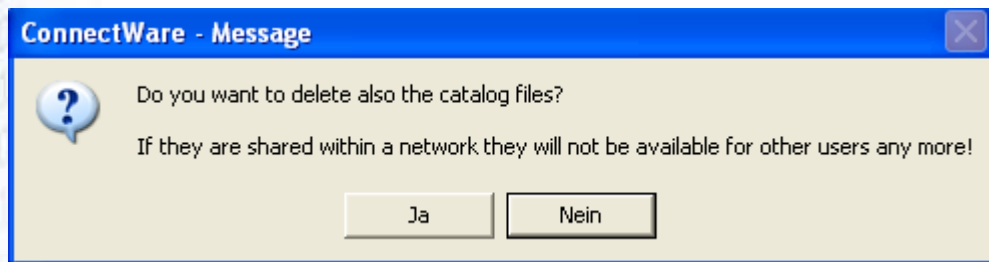
Please refer to the manual of your ODBC application for further details how to access an ODBC data source.

The most Microsoft Tools (e.g. MS Access, MS Excel) allow the access via the Option „External Data“.

9. Delete Data Source

The created data source can be deleted via the ODBC administrator. To do so, open the ODBC administrator and mark in the list „User-DSN“ the name of your data source and click on „Delete“.

A message will appear asking if the data source really should be deleted. After clicking on “Yes” this message from ConnectWare will appear:



“No” : only deletes the entries in the ODBC system, the system tables (catalog) are kept. This allows you to use them later again. And other users can still working with this system tables.

If you are not sure, it is recommended to keep the system tables.